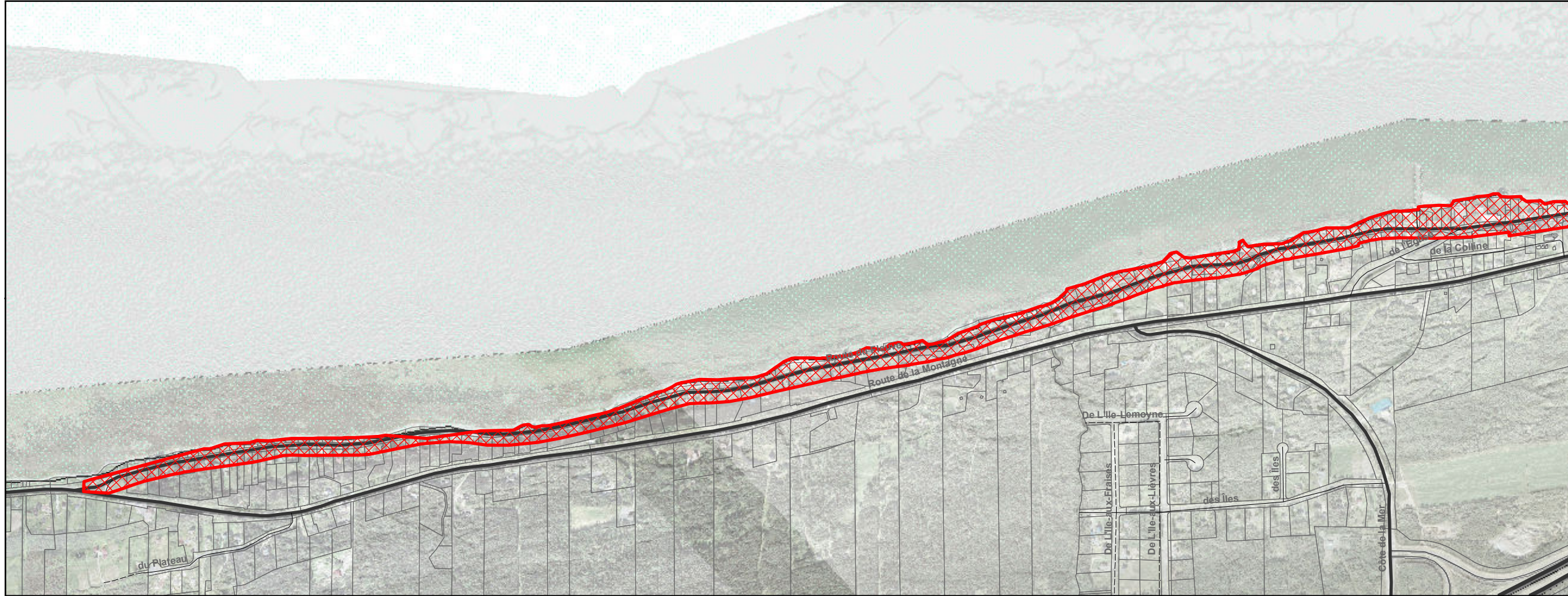
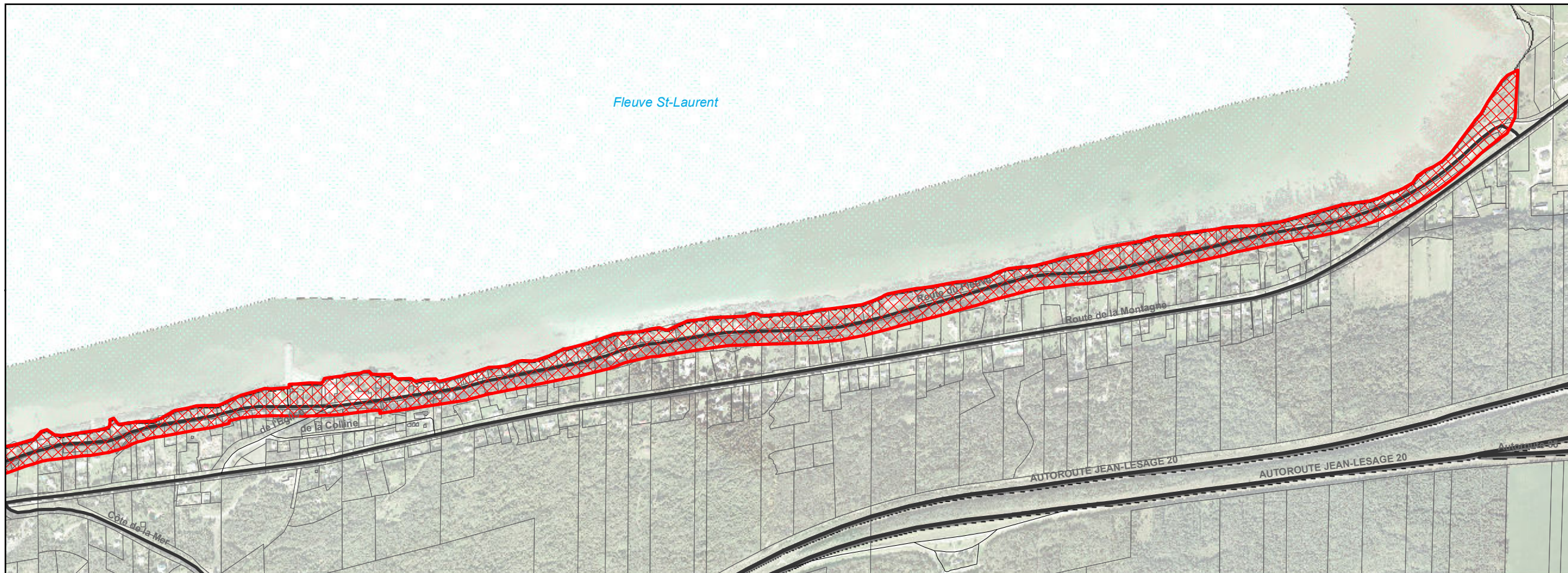


## Section ouest



## Section est




# SCHÉMA D'AMÉNAGEMENT ET DE DÉVELOPPEMENT RÉVISÉ


## LE PATRIMOINE CULTUREL

### Plan 9-4


Le noyau du village de  
Notre-Dame-du-Portage


#### Légende


 Territoire d'intérêt patrimonial


 Cadastre

#### Topographie

 Réseau routier supérieur

 Cours d'eau principal

 Limite municipale

 Fleuve St-Laurent

 Lac



1 : 12 500



Service de l'aménagement du territoire  
Novembre 2019